

# *The Chimes*

*October 5, 2010*

## *Saint Paul's Worship Schedule*

### *Sunday*

#### **9:00 am: Holy Communion**

*First Sunday of month: Family Worship  
(service designed with children in mind);*

*Remaining Sundays: service concurrent with Sunday School*

#### **10:45 am: Holy Communion**

*Traditional liturgy*

*Saint Paul's Evangelical Lutheran Church  
415 E. Athens Ave., Ardmore, PA 19003  
The Rev. Dr. Harry W. McDowell II, Pastor  
610-642-3211      610-658-3262 (fax)  
[www.stpaulsardmore.org](http://www.stpaulsardmore.org)*

Mark your calendars—

# **SAINT PAUL'S ANNUAL MEETING**

**Sunday, February 6, 2011**

Following worship at 9:30 am  
(One service only; no Sunday School)

The meeting will be held in the sanctuary;  
a luncheon will follow in Fellowship Hall.

All members are encouraged to attend  
this important meeting  
& the luncheon that follows.

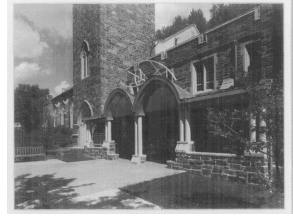
**Chimes publication  
information**

---

*The Chimes*, the newsletter of Saint Paul's Evangelical Lutheran Church, is published monthly for the inspiration, education and entertainment of its members and friends. Comments and suggestions are welcome. Just mail, e-mail or deliver them to the church office.

The next issue of *The Chimes* will be published on **Thursday, November 4**. Your articles are due in the office no later than noon on **Tuesday, October 26**. Thank you!

# Thoughts from the Pastor



***Jesus said to them, "Let the children come to me; do not stop them..."  
And he took them up in his arms, laid his hands on them, and blessed them.***

*Mark 10:14, 16*

Dear Friends:

During the fall season every year, I think of Jesus' admonition above: "Let the children come to me." School has started and everything changes. There are children and youth walking to and from schools and bus stops. There are school buses going up and down Athens Avenue and Wynnewood Road, sometimes parking and waiting in front of the church and parsonage. There are large groups of boys and girls training for track events, running all over the place, including South Ardmore Park across the street. At this time of year I realize how much I miss the sounds of children and youth during the summer months.

And this is a time of renewed and increased activities for the young people of this congregation. Sunday School began its second year in a new format. On the first Sunday of each month, the children will join us in church for a Family Worship Celebration. On the other Sundays, the children meet for worship in Fellowship Hall and then go to their classes. Confirmation class will begin again on Sunday, October 10. Families with Young Children held their kick-off picnic and moonbounce last Tuesday, September 21<sup>st</sup>.

My own family grew by a factor of two this past year as my daughter-in-law had twins last January. Now Alex and Liam join their cousins Nelson and Gabriella.

With all of this renewed and increased awareness of children and youth at this time of year, I am reminded of how young people change life, making it more alive, more fun, more exciting.

Give thanks to God for your own children and grandchildren, and for those in our congregation and communities. And let's remember to pray for those children in foster care, and for those who will be born this year, and for those who will be adopted.

"[Jesus] took them up in his arms, laid his hands on them, and blessed them."

In Christ,

Pastor Skip McDowell

---

---

## Baptisms

**Caroline Rose Conybear**, daughter of Ellen and Jeffrey Conybear, was baptized on September 19.

**Madelyn Lucille Venezia**, daughter of Nicole and Dominic Venezia, was baptized on September 19.

---

---

## Change of Address

Michael Casey  
731 Old Buck Lane, # 205  
Haverford, PA 19041-1233

Carter & Pat Merbreier  
21412 Shannondell Drive  
Audubon, PA 19403

Vernon & Joan Newhouse  
404 Cheswick Place, Apt. 145  
Bryn Mawr, PA 19010-1263

Lorraine Zook  
2101 Belmont Ave., Flanigan 28-W  
Philadelphia, PA 19131

---

---

## Prayers

**Please pray for our men and women in the armed services**, especially Michael Burns (son of Linda & Bob Burns); Christopher Crowell (son-in-law of Linda Martin); Elizabeth Hernandez (friend of Nicole Barron); and Brandon Mader (son of Amy Black).

**Prayers are also requested for:** Charline Allen (friend of Linda Stanton); Larry Areheart (friend of Andy Heller & Jane Knappe); Fred Bergner (friend of Mark Muller); Bill Buchanan; Liz Cassidy; Kent Clelland (brother of Christine Stallkamp); Charlotte Conybear; Diane Coombs (friend of Linda Martin); Janet Feldman (sister of Julia Frieden); Frank Helms (friend of Hazel Pelletreau); Nicole Holobovich (friend of Toni Whaley); Ginger Klepfer; Melanie Kolb; Chris Marshall (friend of Erin Denman); Howard Marshall (cousin of Tom Keyser); Bruce McCluskey (former member and friend of Elaine Hardenbergh); Matt Schnaath; Cynthia Smith; Frank (friend of Elaine Stellwagen); and Noah (friend of Barbara Keyser).

---

---

## Alternative Gift Market—Suggestions Wanted

Do you have a charity that is near and dear to your heart that you would like to have represented at this year's Alternative Gift Market? Please contact Lorie Foust (mfoust1@comcast.net) or Denette Stetler (djstetler@verizon.net) with your suggestion(s). We are hoping to bring variety to this year's event and broaden opportunities for giving during the Christmas season.

---

---

## Thank You

*(The following letter of thanks acknowledges a gift from Saint Paul's Miriam Circle. Miriam Circle disbanded earlier this year.)*

Dear Sisters in Christ:

Thank you for your recent gift of \$149.35 to Katie's Fund. As a community of women committed to supporting the gifts and growth of one another, Women of the ELCA could not do our important work without your contribution and your prayers.

Your gift to Katie's Fund shapes the ministry of our organization now and in the future by making global connections, developing Women of the ELCA leaders, and nurturing women's faith through Bible study and other educational resources and opportunities.

Like you, Katharina von Bora Luther was a woman of faith who cared about others because of her love for Jesus Christ and her belief in the Gospel message. We are so thankful that Lutheran women have a long-standing tradition of responding to others in need with cash, service, and in-kind gifts.

We are ever encouraged by the continued and hope-filled support like yours. Together we can and will mobilize women to act boldly on their faith in Jesus Christ!

Sincerely,  
*Linda Post Bushkofsky*  
*Executive Director*  
*Women of the ELCA*



*(The following letter was received in acknowledgement of St. Paul's Mother's Day gift to the BabyManna program.)*

On behalf of all the mothers and their babies you are helping, thank you for [St Paul's] generous gift of \$331 received by Philabundance on 07/06/2010.

Your generous support will help us purchase infant formula, food and other needed items so our over 600 member agencies can continue to provide help for babies at risk for hunger and malnutrition. With your help, we can help make sure that all babies in the Delaware Valley grow healthy and strong.

As we expand our efforts against hunger in the Delaware Valley, and work to provide a full plate of services and food to our hungry neighbors, we are especially grateful for the trust you place in us by providing financial support. Your organization is an important partner in our fight against hunger, so please feel free to call me at (215) 339-0900, ext. 246 with any questions or comments.

On behalf of the infants your organization is helping to nourish, thanks again for your support.

Sincerely,

*Marianne Lynch*

*Director of Corporate, Foundation and Government Support*



***September 12<sup>th</sup> Drive for Charlotte  
45 New Bone Marrow Donors – Thank you!***

St. Paul's members came out in the rain to join the national registry of marrow donors with a whopping turnout—54 people, more than one third of our attendance in church on Rally Day, presented for screening. Of those 54 individuals, 45 successfully joined the registry. Congratulations to those who may now get a phone call to change and potentially save another's life—what a truly miraculous and generous offering.

Deepest gratitude and appreciation to all of you who baked and donated delicious pies, cakes, breads, cookies, and brownies—your tempting sweets raised \$650 in purchases and gifts. This was an incredible success by any measure.

Thanks are also due to the volunteers who showed up in the morning to move tables and chairs, be trained to complete the paperwork, and stayed all day to staff the drive and sale. It took many individuals working both in advance and on the 12<sup>th</sup> to make this day a success.

St. Paul's is a warm, wonderful faith family. This event was a great witness to the depth of caring and support we possess. Thanks again to all who volunteered, registered, baked, purchased or donated. If you missed the excitement, it's not too late to contribute. Send a check made out to St. Paul's with "Charlotte's Drive" in the memo line.

*Elizabeth Lexa*  
baldwin2020@gmail.com

---

---

## Senior Friends Monthly Luncheons

*All senior friends are invited to join us for informal monthly meetings and luncheons.*

The **FIRST MEETING** will be at St. Paul's on **TUESDAY, OCTOBER 19 FROM NOON TO 1:30 PM**. Bring a brown bag lunch so that we can dine together—we will supply beverages and a surprise or two!!! We will play bingo and trivia games, and will pass out a survey to incorporate your ideas into this year's calendar of events. We are planning to cater several of our luncheons and to do some limited travel on a few of the days. **Please call the church office to register for this event (610-642-3211) and also to let us know if you need help with transportation.**

We are looking forward to another year of food, fellowship and fun—*Linda Stanton, Nan Dormans, Helene Roth and Pastor Skip*

---

---

## St. Paul's Financial Picture

Time period: *Jan. 1, 2010 – Aug. 31, 2010*

Receipts <sup>1</sup>	+ \$300,731
Disbursements <sup>1</sup>	<u>—388,371</u>
<b>Subtotal:</b>	<b>—87,640</b>
Transfer from Endowment Fund <sup>2</sup>	<u>+58,350</u>
<b>Total:</b>	<b>— 29,290</b>

<sup>1</sup> Does not include Memorials & Gifts, Cemetery or Suspense Funds

<sup>2</sup> Approved at Congregational Meeting, Feb. 7, 2010

Waneta Peart, Financial Secretary

**Adult Education Opportunity  
led by St. Paul's member  
Michael Ashburn, M.D.\***

*Mission and Ministry in Haiti*

Three Wednesday evenings: October 6, 13 and 20  
7:00 pm in the Kugler Room

**On Oct. 6 & 13**, Michael Ashburn will discuss and show pictures of his time in Haiti as part of a medical team, from the Hospital of the Univ. of Pennsylvania, that was dispatched to treat victims of Haiti's January 12 earthquake.

**On Wednesday, Oct. 20**, all those interested will meet again to discuss the possibility of a mission trip to Haiti in the summer of 2011!

Don't miss this opportunity to learn about  
the work of Michael and his team.

*\* Michael is Professor of Anesthesiology & Critical Care, and  
Director of Pain Medicine & Palliative Care at the Univ. of Penna.*

**SAVE THE DATE  
Saint Paul's Blood Drive:  
Monday, November 29  
1:30 – 7:30 pm**

Remember, you are eligible to give blood every 56 days, so you can donate blood prior to October 4<sup>th</sup> and still be eligible for the drive on November 29<sup>th</sup>. Give blood, save lives!

# CROP Hunger Walk

**Sunday, October 17 at 1:00 pm**

Mark your calendars, get out your wallet or checkbook or put on your sneakers! This year you and I can make a difference helping those who are less fortunate to have more food, more education, and more clean water to drink.

On October 17<sup>th</sup>, we are again joining the Ardmore/Main Line Crop Walk. This is the 32<sup>nd</sup> annual Main Line Walk! We will meet at the Suburban Square parking lot (in Ardmore, across from Ruby's) for the 10k (6.2 mile) walk. For those who are not sure they can walk that far, the route is west on Lancaster Ave., returning east via Montgomery Ave., so you can turn around at any point, if need be. Each participating church is asked to provide a crossing guard.



Last year we contributed \$2700. The previous year we contributed \$2,125. CROP stands for

Communities Responding to Overcome Poverty.

Monies and goods will be sent to aid recent flood, hurricane, and earthquake victims, to relieve famine in Africa, and to help war refugees in Darfur, Gaza, Afghanistan, Pakistan, Iraq, and Syria. Additional projects are funded in Brazil, Myanmar, and Indonesia. Ten percent of our donations come back to feed the hungry in our own area.

Please note, contributors can specify one of many denominational charities to receive the donation. These include, for instance, Project Hope or Lutheran World Relief. If the contributor does not designate a recipient, Church World Services, a consortium of Protestant and Orthodox Churches, will quite capably direct the money to needy recipients.

## **Here's how it works:**

- **Sign up and receive a CROP Walker envelope.**
- **Fill out the information requested and ask friends, family, co-workers and neighbors to help you help others by making a donation. If a contributor desires to designate a charity, please indicate that in the appropriate column.**
- **Return the completed envelope and donations to Linda Stanton by NOVEMBER 1. All checks should be made out to St. Paul's Evangelical Lutheran Church with *CROP WALK* on the memo line.** (more ►)

If you can't walk that day, you can still participate . . . Volunteer to be a crossing guard or contribute to someone who is walking. This is a great opportunity for a fun family activity. Baby strollers and wagons are always welcome.

See or call Linda Stanton (610-645-7752) for more information or to sign up.

## **Families with Young Children**

# **JOIN US FOR A SPOOKTAKULAR HALLOWEEN PARTY**

**Sunday, October 24**  
(Please note date change)

**5:00 – 6:30 pm**  
**Fellowship Hall**

**Come in costume for a Halloween craft and dinner.**

**Hot dogs and macaroni & cheese provided**

**Families please bring the following items:**

**A – M side dishes**  
**N – Z desserts**

**Please register with the church office by Friday, October 22**  
**(610-642-3211 or [millie@stpaulsardmore.org](mailto:millie@stpaulsardmore.org))**

**Free-will offering**

# Navajo Lutheran Mission ([www.nelm.org](http://www.nelm.org))

Many of you may not be aware that the congregation of St. Paul's has for many years supported a Lutheran mission in Rock Point, Arizona. There are many ways to help—from direct donations to shopping online and saving box tops and UPC symbols.

**MISSION STATEMENT:** *The Navajo Lutheran Mission, in partnership with the Navajo People and rooted in the Gospel of Jesus Christ, is a community seeking to meet the educational, health, social and spiritual needs of the Navajo People.*

## **Early History of the Navajo Evangelical Lutheran Mission**

The lease for the Navajo Evangelical Lutheran Mission (NELM) was signed in 1953 in response to a request by Rock Point community members, in collaboration with tribal leaders and Christian missionaries, for an organization that would service the spiritual, educational, health, and social needs of the Rock Point community. At that point, NELM was little more than two trailers and a small staff with big dreams and high expectations of what could be accomplished with and for the Navajo. The mission staff began by organizing home visits to adequately (and accurately) address the needs of the Navajo.

The first structure built on the Mission housed an examining room, one hospital room for overnight patients, two small apartments, and a space for Chapel services. All of the Mission staff lived in trailers and the staff held open-air services, with people interpreting in Navajo for those who came to listen. The very first worship service held in the new structure was on February 28, 1954. Twenty people gathered in the new building, and one month later 45 Navajos were attending the services. The Mission School was built in 1961, where eventually Sunday services came to be held. Soon the school was not big enough to hold the growing congregation, and in 1962, a new chapel was built.

In 1960, the Mission was incorporated as the Navajo Evangelical Lutheran Mission. In 1961, the school building was completed and 30 students were enrolled on a continual basis. Eventually a larger school was built, which can house up to 70 students. The old school was transformed into the Mission Office, which remains as such today. Over the years apartments were added, the maintenance shed enlarged, and one building was converted into a thrift shop, all of which make up the present day Mission, now a five-acre campus.

The Mission community has matured since its first years and has learned much from past experiences. In 2003, NELM celebrated its 50th anniversary and the bridging of past and present. (more ▶)

## ***How can you help?***

Go to [www.boxtops4education.com](http://www.boxtops4education.com) and join; search the zip code 86545 and select the Navajo Lutheran Mission School. Explore the many ways to support the school through this site both by shopping online and saving box tops from certain products.

Go to [www.labelsforeducation.com](http://www.labelsforeducation.com) and join; select the Navajo Lutheran Mission School and read the instructions for how to save UPC codes from specified products that build purchasing power for the school.

The Navajo Nation has been hit especially hard by the economic downturn. Unemployment now runs between 60% and 70%. No gift is too small.

**Please look for a Temple Talk on the NELM in the coming months.**

## **November Birthdays**

- 1 Melissa Erickson
- 2 Joanne Mullin
- 3 Helen McCloskey, Rhonda Moyer-Wagner
- 4 Reed Lukasiewicz
- 5 Kathryn Kerr, Matthew Wendelken
- 6 Sarah Carstens, Paul DeLomba, Sr., Madison Tintera
- 7 William Harris III
- 8 Carolyn Ashburn, Susan Mazzanobile, Nancy McCoy
- 9 Conrad Sides, Marianne Weldon
- 10 Analynn Ewers
- 11 Robert Aronchick
- 12 Weston Klimas, Logan Reasoner
- 14 Samantha Aronchick, Eric Herrschaft, Libby Hoyer, Grace McCabe, Bridget Mullin, Ray Williams
- 15 Margaret Gibb
- 16 Ellen Conybear
- 17 Amanda Janasik, Boofie Younkin
- 19 Hilary Clark
- 20 Lynda Kozarski, Lisa McCabe, Meghan McFillin, Cynthia Smith, Robert Weldon
- 21 Stark Lash
- 22 Larry DeWarf, Christine Mazzanobile
- 23 Connie Cutler, Carol Hammarberg, Daniel Penne
- 24 Xavier Cachon, Paige Henderson, Glenn Riggs, Jr., Donna Wren
- 25 Gardiner Warner
- 26 Laura Dormans, Ava Reasoner
- 29 Dawn Klimas, Margaret Lucas
- 30 Joseph Chung, Connor McCabe

# Council Corner

**Don Parman  
Stewardship Chair**

## **Where were you born? Where did you grow up?**

I was born and raised in Fremont, Ohio—a small town near Toledo. I wandered south to Davidson College for my undergraduate degree in philosophy and then went to law school at the University of Michigan to make up for that otherworldliness. The best part of law school was meeting my wife Barbara, a graduate student in biology, in a coed dormitory which spawned at least four marriages. After law school I accepted a job at a law firm in Philadelphia and we moved east.

## **How do you spend your days? What is your calling? What do you do in your free time? Hobbies?**

For 30 years I spent too many days and hours heading up the corporate legal department at GlaxoSmithKline, including work on all the mergers that changed the identity of the company from Smith Kline & French to GSK. I loved that work (which I would describe as legal problem solving) until my last day at the office, but had aimed to retire—which I did two years ago—at an age where we could do the things we had deferred because of my work. Since retirement I have been catching up on reading, becoming more active with a theater company where I have served on the board of directors, pro bono representation of Philadelphia homeowners facing mortgage foreclosure, and traveling to visit with our three children. Our daughter Kate lives in Oakland, our son John near Sacramento and our son Jordan and daughter-in-law Ellen in Denver, so we have wonderful places to visit.

## **What brought you here? What keeps you here?**

Through my graduation from high school my religious experience was pretty much out of “Prairie Home Companion.” Ours was a traditional Lutheran church (historically German-speaking, one of three in a two block radius in my home town). Once I left home for college, I stopped attending services save for Christmas with my parents. Once we were expecting our first child, Barbara and I thought we needed reinforcements so we joined St. Timothy’s in Aston and attended there until we moved to Merion and switched churches. As we looked at churches in this neighborhood, we settled on St. Paul’s because of the lively children’s program (we were charter organizers of Parents with Young Children!) and Pastor Treichel’s preaching. As time has passed we have stayed at St. Paul’s in large part because of the friendships we have developed—a healthy percentage of the people we consider our best friends belong here as well.

## Sunday School and Family Worship Sunday

Sunday School for children and youth from age 3 through 8<sup>th</sup> grade is offered concurrently with the 9:00 am worship service. Children from age 4 through 6<sup>th</sup> grade gather in the Fellowship Hall at 9:00 am for music and a group activity before going to their classrooms with their teachers. Parents can take three year-olds directly to their classroom on the lower level of the church, and 7<sup>th</sup> and 8<sup>th</sup> graders meet in the Kugler Room.

The first Sunday of each month is celebrated as a family worship Sunday. There is no Sunday School on these days so that families can worship together at the 9 o'clock service, which is designed with children in mind. All are welcome!

### 2010 – '11 Sunday School Teacher Roster

Class	Teachers		
<b>3 year-olds</b>	Stephanie O'Mara	Mary Lynn Kennedy	Shannon Moran
<b>4 &amp; 5 year-olds</b>	Jamie Koerner	Melissa Krissingner	Kylie Stetler
<b>1<sup>st</sup> &amp; 2<sup>nd</sup> grades</b>	Kari Draper	Pam McDowell	Elisabeth Wagner
<b>3<sup>rd</sup> &amp; 4<sup>th</sup> grades</b>	Merissa D'Antonio	Amy Horn	Liz Cassidy
<b>5<sup>th</sup> &amp; 6<sup>th</sup> grades</b>	Don Parman	Mark Pierce	
<b>7<sup>th</sup> &amp; 8<sup>th</sup> grades</b>	Bill Frey	Bill Wagner	

**The next NEW MEMBERS CLASS & LUNCHEON  
will be held on Sunday, October 24,  
following 10:45 am worship.**

If you would like to attend, please register with the church office  
(610-642-3211 or [millie@stpaulsardmore.org](mailto:millie@stpaulsardmore.org)).

# Halloween Tours of Old Dutch Schoolhouse & Saint Paul's Cemetery

(a benefit for the restoration & maintenance of the schoolhouse)

**Friday, October 29 & Saturday, October 30  
at 7:00 pm**

- ❖ Listen to *The Legend of Sleepy Hollow* in the candlelit one-room schoolhouse.
- ❖ Enjoy seasonal refreshments.
- ❖ Tour the graveyard after dark.
- ❖ Hear fascinating stories about some of Lower Merion's dearly departed.

**Tickets, at \$10 per person, can be purchased at the cemetery on Friday & Saturday evenings.**

**Questions? Call Saint Paul's  
church office at  
610-642-3211.**



# ***“Raising Dough”—A Path to Inspirational Giving***

*“Raising Dough” introduces gift planning concepts and opportunities in a recipe format. These opportunities range from gifts during your lifetime to gifts made at or after death. This is the fourth in a year-long series of recipes for inspirational giving that the Stewardship Committee is presenting each month in “The Chimes.” Feel free to contact either Carol Hammarberg or Don Parman if you would like to receive the complete “recipe box” to see which opportunities might best fit your individual situation. Individual counseling through professional advisors is available at no cost if you have questions.*

## ***Month 4 – Charitable Gift Annuity***

When Great Aunt Ethel left her niece Annie a large but low performing bond fund, Annie took Matthew 10:8 to heart: “Freely you have received, freely give.” Ethel knew that Annie needed more funds for retirement. Annie learned that she could give those funds to the ELCA Foundation in return for a charitable gift annuity. Her monthly income would immediately double and would be guaranteed for the rest of her life. When she died the remainder of the annuity went to the Lutheran school where Aunt Ethel had been a teacher and from which Annie graduated.

### ***The Recipe***

#### *Ingredients:*

- ❖ Cash or stock (including mutual fund shares)

#### *Tools Needed:*

- ❖ Secure annuity issuer

#### *Results:*

- ❖ Immediate tax deduction
- ❖ Fixed income for life/lives
- ❖ Future charitable gift

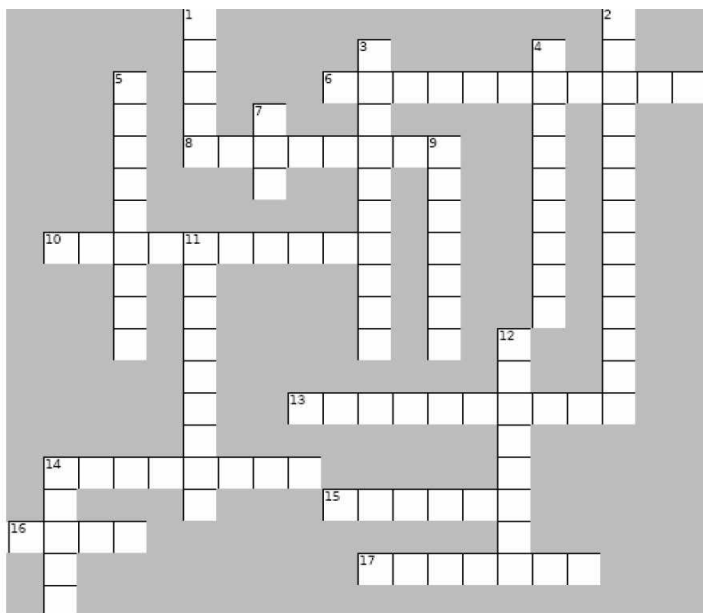
#### *Costs:*

- ❖ None

***“Freely you have received, freely give.”***  
*(Matthew 10:8)*

# Sharing the Gift

## Crossword Puzzle



- | Across   | Down  |
|--|---|
| 6 Interfaith Network helps the homeless of the Montgomery County | 1 Mentoring children in West Philadelphia                                   |
| 8 You can buy a flock of these at the Alternative Gift Market    | 2 Providing food for the hungry   |
| 10 Where we serve the hungry at 63rd and Market in Philadelphia  | 3 St Paul's latest success story - a registration drive for aplastic anemia |
| 13 The gift of life  | 4 Formula, diapers and blankets are needed by this organization             |
| 14 Our missionary, Barabra Robinson, spreads the Good News here  | 5 Our Sunday School children made 120 _____ bags for AFF                    |
| 15 Boxtops for Education will help these Native Americans        | 7 _____ for Friends helps feed the elderly and homebound                    |
| 16 A walk to stop hunger in the world                            | 9 A ministry of Christian caregiving  |
| 17 Weekly deliveries to brighten someone's day                   | 11 Holiday to buy gifts for Lutheran Children and Family Services           |
|  | 12 Working _____ helps women "dress for success"                            |
|  | 14 Number of partitions in Aid For Friends food tray                        |

# NOVEMBER CALENDAR

Monday, November 1	
7:00 pm	Stephen Ministry/Kugler Room
Tuesday, November 2	
7:00 pm	AA/Kugler Room
Thursday, November 4	
9:15 – 11:15 am	Community Bible Study / throughout church
TBA	November <i>Chimes</i> published
1:00 – 2:30 pm	Women’s Bible Study/Kugler Room
6:30 pm	Children’s choir rehearsal
7:15 pm	Council meeting/Kugler Room
7:30 pm	Adult choir rehearsal
Saturday, November 6	
8:30 am	Men’s Bible Study/Kugler Room
Sunday, November 7—All Saints’ Day	
8:40 am	Matins choir warm-up
9:00 am	Holy Communion (Family Worship— <i>no Sunday School</i> )
	Holy Communion
	Youth choir rehearsal
10:45 am	
7:00 pm	
Tuesday, November 9	
7:00 pm	AA/Kugler Room
Thursday, November 11	
9:15 – 11:15 am	Community Bible Study/throughout church
1:00 – 2:30 pm	Women’s Bible Study/Kugler Room
6:30 pm	Children’s choir rehearsal
7:30 pm	Adult choir rehearsal
Saturday, November 13	
8:30 am	Men’s Bible Study/Kugler Room
Sunday, November 14	
8:40 am	Matins choir warm-up
9:00 am	Sunday School
9:00 am	Holy Communion
10:45 am	Holy Communion
7:00 pm	Youth choir rehearsal
Monday, November 15	
7:00 pm	Stephen Ministry/Kugler Room
Tuesday, November 16	
12:00 noon	Senior Friends catered Thanksgiving luncheon / Fellowship Hall
7:00 pm	AA/Kugler Room

Thursday, November 18	
9:15 – 11:15 am	Community Bible Study/throughout church
1:00 – 2:30 pm	Women’s Bible Study/Kugler Room
6:30 pm	Children’s choir rehearsal
7:30 pm	Adult choir rehearsal
Saturday, November 20	
8:30 am	Men’s Bible Study/Kugler Room
Sunday, November 21—Commitment Sunday	
8:40 am	Matins choir warm-up
9:00 am	Sunday School
9:00 am	Holy Communion
10:45 am	Holy Communion
TBA	Cooking for the hungry/St. Paul’s basement kitchen
Tuesday, November 23	
7:00 pm	AA/Kugler Room
Wednesday, November 24	
7:00 pm	Thanksgiving Eve Eucharist
Thursday, November 25—Thanksgiving Day: Office Closed	
Friday, November 26—Office Closed	
Saturday, November 27	
8:30 am	Men’s Bible Study/Kugler Room
Sunday, November 28	
8:40 am	Matins choir warm-up
9:00 am	Sunday School
9:00 am	Holy Communion
10:45 am	Holy Communion
Monday, November 29	
12:00 noon	Deadline for December <i>Chimes</i>
1:30 – 7:30 pm	Blood drive at St. Paul’s/Fellowship Hall
7:00 pm	Stephen Ministry/Kugler Room
Tuesday, November 30	
7:00 pm	AA/Kugler Room

## Gifts of Flowers for the Altar

Consider becoming a weekly or monthly sponsor of altar flowers for Sunday morning worship. The cost of the flowers is \$25 per week, \$100 or \$125 per month. **Flowers are needed for Sundays in November.** A sign-up chart for sponsoring altar flowers is available in Fellowship Hall, or you may call Dottie Buchanan at 610-789-8092 to make your request. Once you have signed up, you will receive confirmation of your sponsorship and information about how to make your payment. The dedication(s) for your flowers will be published in the appropriate Sunday bulletin(s).

Saint Paul's Evangelical Lutheran Church  
415 East Athens Avenue  
Ardmore, Pennsylvania 19003-3197

Change Service Requested  
Time Dated Material